

East Mountain Womenade

Providing emergency financial assistance to families with school-age children in the East Mountains.

East Mountain Womenade
P.O. Box 1812 Sandia Park, NM 87047
e-Mail: emwomenade@gmail.com
501 c3 Non-profit

Annual Fall Potluck

Mark your calendars for our annual potluck on Friday, September 28th. It's a great event with superb company, food, and fun, allowing us to joint together in helping our East Mountain community. We could not provide this help if it wasn't for your continued support and faith in our organization. Be on the lookout for your invitation and we hope to see you there!

A Note from our President

Dear Friends,

East Mountain Womenade is in its 16th year of providing emergency financial assistance to families with school aged children in the East Mountains. Thanks to our generous supporters, this past school year we provided financial assistance with home heating, car repair, and eyeglasses just to name a few. We are grateful to school counselors and other school personnel who work tirelessly for our community and refer families to us. It is an honor to be able to do this work with and for our neighbors.

Here's to a great school year!

Kate Roesler

Board Members

President: Kate Roesler
Vice President: Rosemary Stakvel
Treasurer: Carol Sanders-Reed
Secretary: Suzanne Lutz
Board Members at Large:
Leslie Porter
Pam Ruppenthal
Paula Michel
Kim Linder
School Liaison:
Ellen Satz



Ways to Support East Mountain Womenade

Donate directly through our website: <http://www.eastmountainwomenade.org/donate.html>

East Mountain Womenade can be designated as your charity via United Way at many workplaces.

Amazon Smile: When you shop at Amazon Smile, you can have Amazon donate 0.5% of the purchase price to East Mountain Womenade. Bookmark the link: <http://smile.amazon.com>, and designate East Mountain Womenade as your charity.

If you own a business that could provide discounted services to families in crises, please let us know.



Womenade Annual Fall Potluck, September 2017

About East Mountain Womenade

East Mountain Womenade is a grassroots organization that provides financial assistance to families with children in the East Mountains who are experiencing unexpected financial hardships. Counselors, social workers, and faculty members from East Mountain Area public schools identify the families who are struggling. By working with school professionals we have a built in screening process through which needy families are provided with financial assistance via payment of bills directly to utility and mortgage companies, gas cards, cards for groceries and/or clothing purchases, and payment and delivery of firewood or propane so families stay warm in winter.

Founded in 2002, the first East Mountain Potluck was held to raise money to help children, and now sixteen years later, due to the consistent support from local residents, the organization is approaching \$158,000 in assistance distributed to needy families here in the east mountains. Counselors and social workers repeatedly express their appreciation for the uncomplicated and timely process of acquiring aid from East Mountain Womenade. One hundred percent of contributions go to families in need and are tax deductible.

Thank you for being a part of this worthwhile effort. You are making a difference in our community by supporting East Mountain Womenade and we are so grateful!

Edgewood Womenade

Edgewood Womenade was started in July 2017 by MaryKay Herzenach to meet the emergency needs of children and their families in the Edgewood area. In its first year of existence, Edgewood Womenade distributed about \$1500 in emergency financial assistance. Members of their Board of Directors wrote several proposals and were able to secure grants from Smith's and New Mexico Community Foundation. Congratulations Edgewood Womenade and thank you for the difference you are making in the Edgewood area! To learn more about and/or donate to Edgewood Womenade, visit: <http://edgewoodwomenade.org/>

Thank you for your generosity

- Ribs BBQ, for donating chicken wings for the fall potluck.
 - Kim Linder, for photographing the fall potluck.
 - Cyndi Atcitty, for helping design and update our website.
 - Trish and Chris Meyer, for hosting our website.
 - Most importantly, thank you to all the people who gave so generously to EM Womenade.
- The community is a better place because of you.

And More Thanks to.....

East Mountain Garden Club

In December 2017, members of the East Mountain Garden Club gathered for their annual holiday potluck luncheon. For the 12th consecutive year, club members have chosen to make individual holiday contributions to East Mountain Womenade during their holiday luncheon. In 2017, their contributions totaled an impressive \$3,135. Thank you so much for your generous donations.



Womenade Board Members attend the 2017 Garden Club holiday potluck.

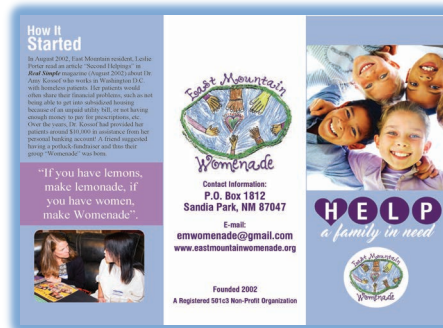


Shelbi Stoerner

A special thanks goes out to Shelbi Stoerner for opening her house for our Fall 2017 potluck. It was an evening of enjoyable company, a bounty of food, and a beautiful setting. It was great to see some new faces and reconnect with others who have attended before. We raised over \$3900 during this potluck "campaign" season.

Shelly "Pinky" Walton

A huge thank you goes to Shelly Walton and her company SignPlex who designed, printed, and donated the new East Mountain Womenade brochure.



Paa-Ko Fine Artists

In August 2017, Paa-Ko Fine Artists had their annual art show and studio tour. The artists donated 10% of their sales to East Mountain Womenade. Your generosity is so appreciated.